

THE GENUINE FINNISH SAUNA

Step into the elemental story



helo KASTOR



Contents

- Home electric heaters** **4**
- Wallmounted heaters** **5**
- Hanko 5
- Cup 5
- Vienna 6
- Havanna 7
- Floor standing heaters** **8**
- Laine 8
- Rocher 8
- Himalaya 9
- Accessories for electric heaters 9
- Roxx 10
- Ringo 11
- Heat retaining heaters** **12**
- Saunatonnttu 12
- Rondo 13
- Commercial electric heaters** **14**
- Laava 14
- Magma 15
- SKLE 16
- SKLA 16
- Steam Generators 20
- Control Panels 22
- Wood burning heaters** **24**
- Kastor Karhu 25
- Kastor Karhu V 25
- Kastor Saga 26
- Kastor T-models** **27**
- Kastor Karhu T 27
- Front frames for T-models 28
- Kastor Saga T 28
- Kastor Karhu Pata 28
- Accessories for Karhu heaters** **32**
- Protecting walls 32
- Safety plate 32
- Infrared panels** **34**
- Wall Panels 36
- Brilliant Accessories 37

Home electric heaters



Wallmounted heaters

Hanko

The Hanko electric heater, a compact and modern design, ensures a comfortable and soothing sauna experience, fitting perfectly into smaller spaces. Designed by top experts, it accommodates 32kg of stones for a cozy sauna session, while its lightweight build and easy installation process stem from high-quality manufacturing.

With CE certification, it efficiently heats saunas ranging from 5 to 12 cubic meters. Available in various models, such as the Hanko STJ with an integrated thermostat, upper limit reset, and a timer offering 3 + 9 hours duration. Additionally, it's available in Black & Chrome colour options, catering to different preferences and needs.



Cup

The Wall Mounted Cup electric heater stands as a timeless classic among electric heaters, renowned for its enduring popularity due to its timeless design, durability, and user-friendly nature. Ideal for small to normal-sized sauna rooms, it holds 23kg of stones, providing a gentle sauna experience, while being lightweight and easy to install for quick room heating.

It bears the Finnish touch of safety and professionalism, ensuring reliability with Finnish Helo. CE-marked, it efficiently warms saunas ranging from 3 to 14 cubic meters. Available in different models—Cup STJ with integrated controls and a timer, and Cup D requiring additional components—it's a testament to quality and reliability. Available in color Graphite.



Vienna



The Vienna Black electric heater is a modern and stylish option for sauna rooms, offering innovation and versatility. It's wall-mounted, freeing up space, and holds 12-20kg of stones, allowing for varied sauna experiences. CE-marked and suitable for saunas from 3 to 13 cubic meters, it provides efficient warmth and gentle steam. There are different models available: Vienna STS with integrated controls, Vienna D requiring additional components, and Vienna STS-WT with enhanced humidity features, allowing lower temperatures and the use of fragrances. It's a quality product from Helo, with over a century of Finnish expertise. Available in color Black.

VIENNA STS -model has integrated controls. A timer in the 9-hour preselection range and 0-3 hours of heating time.

VIENNA D -model requires a separately purchased combination of WE relay box + Pure / Elite Free control panel.



Havanna

The Havana electric heater stands as an innovative pioneer among electric heaters, blending versatile features and modern aesthetics while maintaining the renowned reliability of Finnish Helo quality. Its adaptable stone spaces offer three levels: 20, 28, or 35 kg of stones, allowing for personalized heat experiences. With fewer stones, the sauna room heats rapidly, while increased stones create softer, more enjoyable steam.

Each Havana electric heater is CE-marked, efficiently providing gentle warmth and steam for saunas spanning 3 to 13 cubic meters.

Available in Black, the Havana series presents different models: **HAVANNA STS**: Integrated controls with a built-in thermostat and 8 + 4-hour timing.

HAVANNA STS-WT: Similar controls to the STS model, featuring a water tank that acts as a passive evaporator, generating more humid air for a more comfortable sauna experience at lower temperatures. It also allows the use of milk-based fragrances.

HAVANNA D: Requires a separately purchased combination of WE relay box + Pure / Elite Free control panel.

| Product | Item no. | Colour choice. Item no. | Output (kW) | Sauna volume (m ³) | Weight rocks (kg) | | Size (WxHxD) | Side (mm) | Front (mm) | Ceiling (mm) | Floor (mm) | Suitable control panel | Installation |
|------------------------------|----------|----------------------------|----------------|-----------------------------------|----------------------|--|-----------------|--------------|---------------|-----------------|---------------|--------------------------------|-------------------------------|
| Hanko 60 STJ Black | 000205 | Chrome 000201 | 6.0 | 5-9 | 32 | | 365x575x250 | 70 | 100 | 1300 | 100 | Built-in, mech. Timer & Thermo | Wall mounted |
| Hanko 80 STJ Black | 000206 | Chrome 000202 | 8.0 | 8-12 | 32 | | 365x575x251 | 70 | 100 | 1300 | 100 | Built-in, mech. Timer & Thermo | Wall mounted |
| Hanko 60 D Black | 000214 | Chrome 000210 | 6.0 | 5-9 | 32 | | 365x575x252 | 70 | 100 | 1300 | 100 | WE-30 + Pure / Elite Free | Wall mounted |
| Hanko 80 D Black | 000215 | Chrome 000211 | 8.0 | 8-12 | 32 | | 365x575x253 | 70 | 100 | 1300 | 100 | WE-40 + Pure / Elite Free | Wall mounted |
| Cup 45 STJ, graphite | 004706 | | 4.5 | 3-6 | 15 | | 410x580x280 | 50 | 80 | 1200 | 120 | Built-in, mech. Timer & Thermo | Wall mounted |
| Cup 60 STJ, graphite | 004707 | | 6.0 | 5-9 | 23 | | 410x580x280 | 70 | 100 | 1250 | 120 | Built-in, mech. Timer & Thermo | Wall mounted |
| Cup 80 STJ, graphite | 004708 | | 8.0 | 8-13 | 23 | | 410x580x300 | 100 | 150 | 1250 | 120 | Built-in, mech. Timer & Thermo | Wall mounted |
| Cup 45 D, graphite | 004701 | | 4.5 | 3-6 | 15 | | 410x580x280 | 50 | 80 | 1200 | 120 | WE-30 + Pure /Elite Free | Wall mounted |
| Cup 60 D, graphite | 004702 | | 6.0 | 5-9 | 23 | | 410x580x280 | 70 | 100 | 1250 | 120 | WE-30 + Pure /Elite Free | Wall mounted |
| Cup 80 D, graphite | 004703 | | 8.0 | 8-13 | 23 | | 410x580x300 | 100 | 150 | 1250 | 120 | WE-40 + Pure / Elite Free | Wall mounted |
| Vienna 45 STS, black | 000545 | | 4.5 | 3-6 | 12 | | 420x615x270 | 40 | 60 | 1200 | 110 | Built-in, mech. Timer & Thermo | Wall mounted |
| Vienna 60 STS, black | 000509 | | 6.0 | 5-9 | 20 | | 420x615x270 | 60 | 80 | 1200 | 110 | Built-in, mech. Timer & Thermo | Wall mounted |
| Vienna 80 STS, black | 000510 | | 8.0 | 8-12 | 20 | | 420x615x270 | 80 | 100 | 1200 | 110 | Built-in, mech. Timer & Thermo | Wall mounted |
| Vienna 60 STS Helo-WT, black | 000533 | | 6.0 | 5-9 | 20 | | 420x615x270 | 60 | 80 | 1200 | 110 | Built-in, mech. Timer & Thermo | Wall mounted |
| Vienna 80 STS Helo-WT, black | 000534 | | 8.0 | 8-12 | 20 | | 420x615x270 | 80 | 100 | 1200 | 110 | Built-in, mech. Timer & Thermo | Wall mounted |
| Vienna 450 D, black | 000520 | | 4.5 | 3-6 | 12 | | 400x615x270 | 40 | 60 | 1200 | 110 | WE-30 + Pure /Elite Free | Wall mounted |
| Vienna 600 D, black | 000521 | | 6.0 | 5-9 | 20 | | 400x615x270 | 60 | 80 | 1200 | 110 | WE-30 + Pure /Elite Free | Wall mounted |
| Vienna 800 D, black | 000522 | | 8.0 | 8-12 | 20 | | 400x615x270 | 80 | 100 | 1200 | 110 | WE-40 + Pure / Elite Free | Wall mounted |
| Havanna 60 STS Helo-WT black | 005844 | | 6.0 | 5-9 | 20-35 | | 495x580x300 | 45 | 100 | 1100 | 120 | Built-in, mech. Timer & Thermo | Wall mounted + Floor standing |
| Havanna 60 STS black | 005824 | | 8.0 | 8-12 | 20-35 | | 495x580x300 | 75 | 130 | 1100 | 150 | Built-in, mech. Timer & Thermo | Wall mounted + Floor standing |
| Havanna 90 STS black | 005846 | | 9.0 | 9-13 | 20-35 | | 495x580x300 | 80 | 150 | 1100 | 150 | Built-in, mech. Timer & Thermo | Wall mounted + Floor standing |
| Havanna 90 STS black | 005826 | | 9.0 | 9-13 | 20-35 | | 495x580x300 | 80 | 150 | 1100 | 150 | Built-in, mech. Timer & Thermo | Wall mounted + Floor standing |
| Havanna 450 D | 005830 | | 4.5k | 2-6 | 20-35 | | 475x580x300 | | | | | WE-30 + Pure /Elite Free | Wall mounted + Floor standing |
| Havanna 600 D Helo-WT black | 005847 | | 6.0 | 5-9 | 20-35 | | 475x580x300 | 45 | 100 | 1100 | 120 | WE-30 + Pure /Elite Free | Wall mounted + Floor standing |
| Havanna 600 D black | 005831 | | 8.0 | 8-12 | 20-35 | | 475x580x300 | 75 | 130 | 1100 | 150 | WE-30 + Pure /Elite Free | Wall mounted + Floor standing |
| Havanna 900 D Helo-WT black | 005849 | | 9.0 | 9-13 | 20-35 | | 475x580x300 | 80 | 150 | 1100 | 150 | WE-40 + Pure / Elite Free | Wall mounted + Floor standing |
| Havanna 900 D black | 005833 | | 9.0 | 9-13 | 20-35 | | 475x580x300 | 80 | 150 | 1100 | 150 | WE-40 + Pure / Elite Free | Wall mounted + Floor standing |



Floor standing heaters



Laine



Radiating elegance and sophistication, the Laine heater boasts a sleek design that seamlessly complements any sauna interior. The Laine heater offers versatility, serving as an ideal solution for both wall hanging and floor standing setups. Laine has integrated controls Timer 3+9h, Thermostat and high limit with reset. Additionally, there's an optional D model available, equipped with a separate control panel and relay box.

Installation of the Laine heater is swift and straightforward. With detailed instructions provided, the process ensures ease and precision.

Rocher



Rocher electric heater, a marvel of design that not only captivates the eyes but also offers a delightful sauna experience with its 100 kg of stones. Installed on the floor, this heater can seamlessly integrate into sauna benches.

CE-marked for quality assurance, each Rocher electric heater efficiently warms sauna rooms ranging from 5 to 15 cubic meters, ensuring a consistently warm and soft steam. Available in Chrome, Rocher Pure/Elite models include the Pure or Elite control panel.

Himalaya



The Himalaya electric heater, featuring 100 kg of stones, provides a gentle and soothing sauna bath, reflecting the safe and professional touch of Finnish craftsmanship.

Each Himalaya electric heater is CE-marked, ensuring quality and offers efficiently warm and soft steam for sauna rooms ranging from 5 to 15 cubic meters.

Himalaya Pure/Elite models include the Pure or Elite control panel and are equipped with WT (Water Tank) technology. The water tank acts as a passive evaporator, enhancing humidity in the sauna for a more enjoyable experience at lower temperatures (55-60°C). This technology also allows the use of milk-based fragrances.

Accessories for electric heaters

| Product | Item no. | Use | Dimensions (mm) |
|----------------------|----------|-----------------|-----------------|
| Black glass collar | 0038436 | Laine | 630 x 8 x 510 |
| Glass collar | 0038437 | Rocher/Himalaya | 610 x 8 x 610 |
| Stainless collar | 0038430 | Rocher/Himalaya | 600 x 7 x 600 |
| Black collar | 0038431 | Rocher/Himalaya | 600 x 7 x 600 |
| Glass collar black | 0038438 | Himalaya | 600 x 8 x 600 |
| Railing Rocher 1-4 | 7860005 | Rocher | 149 x 28 x 478 |
| Railing Himalaya 1-4 | 7860006 | Himalaya | 570 x 35 x 570 |

Roxx



The Roxx electric heater embodies modern design and spacious stone capacity, catering to group of sauna experiences. Positioned on the floor, it seamlessly integrates with sauna benches.

The Roxx WT-models feature a distinctive water tank amid the heater resistors, acting as a passive evaporator that enhances humidity within the sauna, allowing for lower temperature enjoyment (55-60°C), creating a warmer sensation on the skin and facilitating easier breathing. Additionally, it accommodates the use of milk-based fragrances.

With 38kg of stones, the Roxx heater ensures a gentle sauna session, reflecting the secure and professional Finnish craftsmanship of Helo.

CE-marked, every Roxx model offers efficient, soft steam for saunas between 5 to 13 cubic meters. Available in Black, the Roxx Pure/Elite models come equipped with the Pure or Elite control panel for added convenience.

Ringo



The Ringo electric heater, crafted for Finnish family saunas, efficiently produces heat with its 70 kg sauna stone capacity and attractive pillar-like design.

Ringo WT-models are equipped with a water tank amid the heater resistors, enhancing humidity within the sauna space. This feature not only allows for a lower temperature sauna experience (55-60°C) but also provides a warmer sensation on the skin and easier breathing. Additionally, it supports the use of milk-based fragrances.

Each Ringo electric heater is CE-marked, offering efficient, gentle steam for sauna rooms ranging from 5 to 13 cubic meters. This heater, reflecting Finnish Helo quality with over a century of experience, accommodates diverse needs.

Available in Black, the Ringo series includes models like Ringo STJ with an integrated thermostat and timer, while Ringo STJ HELO-WT boasts an integrated Helo-WT water tank alongside the thermostat and timer.

| Product | Item no. | Output (kW) | Sauna volume (m³) | Weight rocks (kg) | Size (WxHxD) | Side (mm) | Front (mm) | Back (mm) | Ceiling (mm) | Floor (mm) | Suitable control panel | Installation |
|----------------------------------|----------|-------------|-------------------|-------------------|--------------|-----------|------------|-----------|--------------|------------|--------------------------------|-------------------------------|
| Laine 6 STJ Black | 000640 | 6 | 5 - 9 | | 330x860x315 | 60 | 100 | | 1040 | | Built-in, mech. Timer & Thermo | Wall mounted + Floor standing |
| Laine 8 STJ Black | 000641 | 8 | 8 - 12 | | 330x860x315 | 80 | 120 | | 1040 | | Built-in, mech. Timer & Thermo | Wall mounted + Floor standing |
| Laine 9 STJ Black | 000642 | 9 | 9 - 13 | | 330x860x315 | 100 | 150 | | 1040 | | Built-in, mech. Timer & Thermo | Wall mounted + Floor standing |
| Laine 6 D Black | 000644 | 6 | 5-9 | | 330x860x315 | 70 | 100 | | 1040 | | WE-30 + Pure /Elite Free | Wall mounted + Floor standing |
| Laine 8 D Black | 000645 | 8 | 8-12 | | 330x860x315 | 80 | 120 | | 1040 | | WE-40 + Pure /Elite Free | Wall mounted + Floor standing |
| Laine 9 D Black | 000646 | 9 | 9-13 | | 330x860x315 | 100 | 150 | | 1040 | | WE-40 + Pure /Elite Free | Wall mounted + Floor standing |
| ROCHER 70 Pure brushed steel | 002735 | 6.8 | 5-9 | 100 | 425x1130x425 | 60 | 60 | 60 | 770 | 0 | Pure included | Floor standing |
| ROCHER 105 Pure brushed steel | 002736 | 10.5 | 9-15 | 100 | 425x1130x425 | 60 | 60 | 60 | 770 | 0 | Pure included | Floor standing |
| ROCHER 70 Elite brushed steel | 002730 | 6.8 | 5-9 | 100 | 425x1130x425 | 60 | 60 | 60 | 770 | 0 | Elite Free included | Floor standing |
| ROCHER 105 Elite brushed steel | 002731 | 10.5 | 9-15 | 100 | 425x1130x425 | 60 | 60 | 60 | 770 | 0 | Elite Free included | Floor standing |
| HIMALAYA 70 Pure Helo-WT black | 001930 | 6.8 | 5-9 | 100 | 330x1030x330 | 60 | 60 | 60 | 870 | 0 | Pure included | Floor standing |
| HIMALAYA 105 Pure Helo-WT black | 001931 | 10.5 | 9-15 | 100 | 330x1030x330 | 60 | 60 | 60 | 870 | 0 | Pure included | Floor standing |
| HIMALAYA 70 Elite Helo-WT black | 001900 | 6.8 | 5-9 | 100 | 330x1030x330 | 60 | 60 | 60 | 870 | 0 | Elite Free included | Floor standing |
| HIMALAYA 105 Elite Helo-WT black | 001902 | 10.5 | 9-15 | 100 | 330x1030x330 | 60 | 60 | 60 | 870 | 0 | Elite Free included | Floor standing |
| HIMALAYA 702 D-WT | 001920 | 6,8 | 5-9 | 100 | 330x1030x330 | 60 | 60 | 60 | 870 | 0 | Not available | Floor mounted |
| HIMALAYA 1052 D-WT | 001922 | 10.5 | 9-15 | 100 | 330x1030x330 | 60 | 60 | 60 | 870 | 0 | Not available | Floor mounted |
| Roxx 60 Pure Helo-WT graphite | 002935 | 6.0 | 5-10 | 38 | 490x830x280 | 100 | 300 | - | 1070 | 0 | Pure included | Wall mounted + floor standing |
| Roxx 90 Pure Helo-WT graphite | 002936 | 9.0 | 9-13 | 38 | 490x830x280 | 100 | 350 | - | 1070 | 0 | Pure included | Wall mounted + floor standing |
| Roxx 60 Elite Helo-WT graphite | 002875 | 6.0 | 5-10 | 38 | 490x830x280 | 100 | 300 | - | 1070 | 0 | Elite Free included | Wall mounted + floor standing |
| Roxx 90 Elite Helo-WT graphite | 002876 | 9.0 | 9-13 | 38 | 490x830x280 | 100 | 350 | - | 1070 | 0 | Elite Free included | Wall mounted + floor standing |
| Ringo Black 60 STJ Helo-WT black | 005862 | 6.0 | 5-9 | 70 | 367x750x367 | 100 | 100 | 100mm | 1150 | 0 | Built-in, mech. Timer & Thermo | Floor standing |
| Ringo Black 80 STJ Helo-WT black | 005863 | 8.0 | 8-13 | 70 | 367x750x367 | 100 | 100 | 100mm | 1150 | 0 | Built-in, mech. Timer & Thermo | Floor standing |



Heat retaining heaters

Saunatonnttu



The Saunatonnttu heater is a European-designed, multi-patented innovation acclaimed as the world's top sauna heater. It boasts a unique feature with 100 kg of stones stored in a well-insulated chamber, maintaining continuous heat for extended periods. When water is poured on the stones, it releases soft, abundant, and indulgent steam. Developed in collaboration with renowned designer Risto-Matti Ratia. This Finnish-designed heater allows for flexible sauna interior design due to its small safety distances and corner model structure that easily mounts to sauna benches.

Offering consistent and efficient heat, the Saunatonnttu's optimized insulation maximizes usability comfort and permits sauna use without preheating. Its minimal protective distance requirement allows flexible placement within the sauna, with a relatively cool surface. Equipped with a convenient controller for heater settings, its heat-retaining stones enable immediate use without preheating. The included OLEA 63 controller enhances its usability.

CE-marked, the Saunatonnttu series caters to sauna rooms of 7-17 m³, presenting an energy-efficient choice for active sauna enthusiasts. Available in Black, its outstanding insulation ensures extended steam and heat retention within the sauna, eliminating the need for preheating.

Rondo



The Rondo is a round-shaped, "ready-to-use" heater designed to effectively retain heat. With a patented 360-degree rotating lid, it offers innovative possibilities for sauna interior design. Featuring a generous 100 kg stone space, it provides gentle and moist sauna experiences.

This heat-reserving heater ensures even and efficient heat distribution while prioritizing user comfort. Its optimized insulation shell retains heat exceptionally well, allowing for immediate sauna enjoyment without the need for preheating. The heater's surface remains relatively cool, enabling flexible placement within the sauna with minimal protective distance. Unique with its 360° rotating lid, the Rondo facilitates easy water throwing from any direction. Its efficient insulation allows spontaneous sauna use without preheating, maintaining low and efficient maintenance power.

Equipped with an automated control unit attachable to the wall, every Rondo electric heater is CE-marked, catering to sauna rooms between 7-18 m³. Available in Graphite, it stands as an energy-efficient choice for active sauna enthusiasts, ensuring prolonged heat retention and steam within the sauna space.

| Product | Item no. | Output (kW) | Sauna volume (m ³) | Weight rocks (kg) | Size (WxHxD) | Side (mm) | Front (mm) | Back (mm) | Ceiling (mm) | Floor (mm) | Suitable control panel | Installation |
|----------------------|----------|-------------|--------------------------------|-------------------|--------------|-----------|------------|-----------|--------------|------------|--------------------------------|----------------|
| Saunatonnttu 6 black | 002701 | 6.4 | 7-14 | 100 | 500x1090x500 | 30 | 30 | | 800 | 0 | Control panel Olea 63 included | Floor standing |
| Saunatonnttu 8 black | 002706 | 8.0 | 9-17 | 100 | 500x1090x500 | 30 | 30 | | 800 | 0 | Control panel Olea 63 included | Floor standing |
| Rondo 65 graphite | 002907 | 6.5 | 7-13 | 90 | 500x860x500 | 50 | 50 | 50 | 1040 | 0 | Control panel RA19 included | Floor standing |
| Rondo 96 graphite | 002908 | 9.6 | 10-18 | 90 | 500x860x500 | 50 | 50 | 50 | 1040 | 0 | Control panel RA19 included | Floor standing |

Commercial electric heaters

Laava



Introducing the Laava, a robust free-standing heater that has been an industry benchmark for over 25 years. Ideal for large sauna rooms and institutional setups, the Laava heater's efficiency is unmatched, with a generous stone capacity of up to 60 kg.

With top-notch design and technology, the Helo Laava ensures durability and classic aesthetics. If you seek a stove that performs consistently even in demanding conditions, choose Helo Laava. Operated with a separate combination of the WE40 relay box and Pure/Elite Free controller (not included in the price), this heater is a testament to more than 100 years of Finnish Helo quality.

CE-marked for quality assurance, the Laava electric heater provides efficiently warm and soft steam for sauna rooms ranging from 8 to 24 cubic meters. Available in Graphite Grey, it offers cost-effective energy use without compromising steam quality.

Magma



Massive, efficient, and cost-effective Magma electric heaters have enough force to steam a large group of bathers at the same time. Designed to meet very high requirements, Magma is a great choice for large sauna rooms and institutional saunas for public use. The large stone space of the Magma heater can hold up to 80kg of stones.

Durability, performance, and low maintenance are its key features. The Magma heater is operated with a separate combination of WE50 relay box and Pure/Elite Free controller. Pure / Elite Free + WE50 relay box is not included in the price.

Top quality design and technology guarantee a long-lasting, classic-looking heater. If you demand durability and efficiency from your stove even in demanding conditions, choose Helo Magma.

Every Magma electric heater is CE-marked and offers efficiently warm and soft steam for 18 up to 46 cubic meter sauna rooms.



SKLE

The freestanding SKLE heater has top tier efficiency and thus making it suitable for large, commercial-sized saunas with a lot of traffic. Digitally controlled for easy monitoring. Overall easy to use, low maintenance choice. The large stone space of the SKLE heater can hold up to 60 kg of stones.

The SKLE electric heater is operated with a separate combination of WE40 relay box and Pure/Elite Free controller. Pure / Elite Free + WE40 is not included in the price.

Every SKLE electric heater is CE-marked and offers efficiently warm and soft steam for 18 up to 46 cubic meter sauna rooms.



SKLA

The freestanding SKLA heater has top tier efficiency and thus making it suitable for large, commercial-sized saunas with a lot of traffic. Digitally controlled for easy monitoring. Overall easy to use, low maintenance choice. The large stone space of the SKLA heater can hold up to 80 kg of stones.

Top quality design and technology guarantee a long-lasting, classic-looking heater. If you demand durability and efficiency from your stove even in demanding conditions, choose Helo SKLA.

The SKLA electric heater is operated with a separate combination of WE50 relay box and Pure/Elite Free controller. Pure / Elite Free + WE50 is not included in the price.

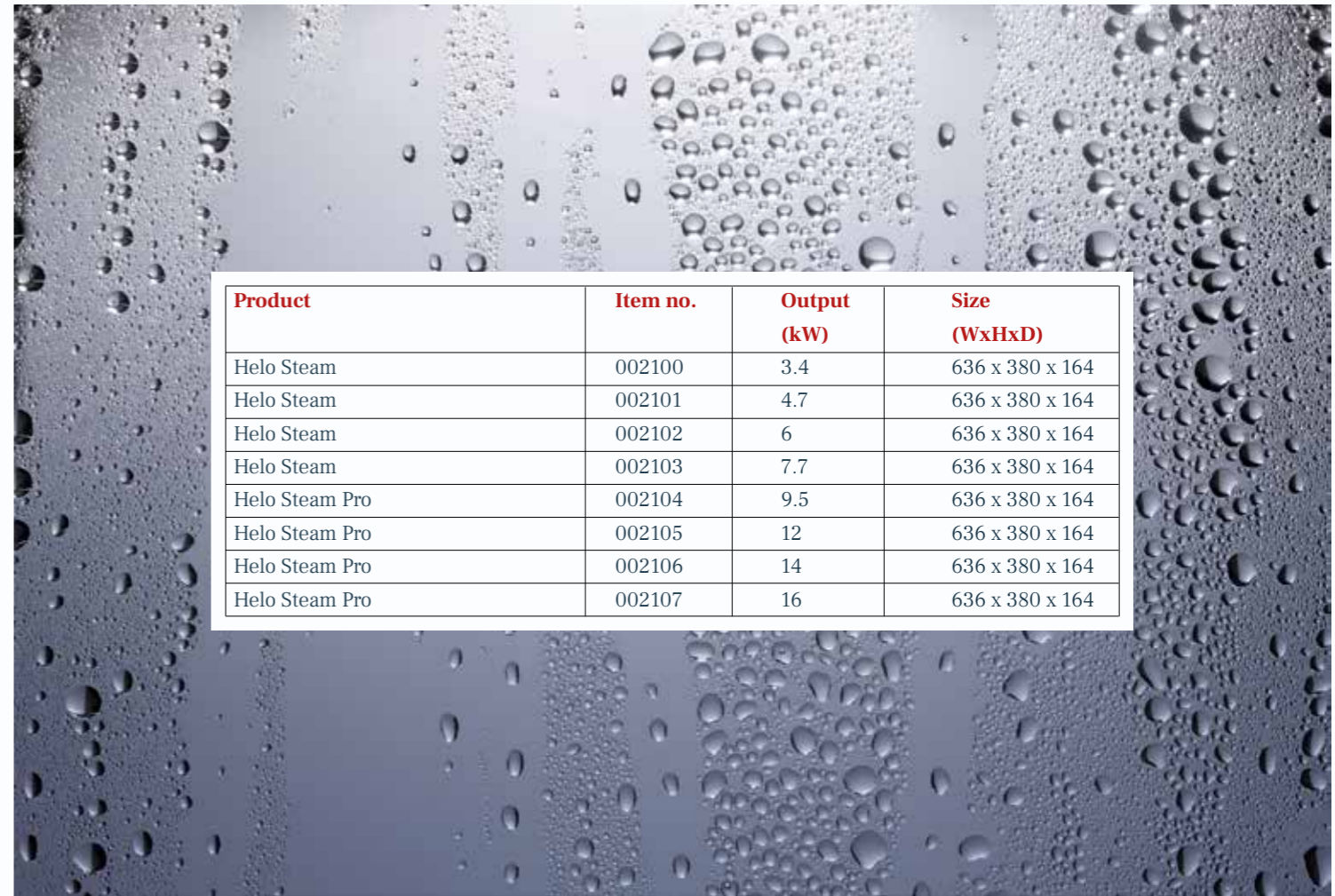
Every SKLA electric heater is CE-marked and offers efficiently warm and soft steam for 8 up to 46 cubic meter sauna rooms.



| Product | Item no. | Output (kW) | Sauna volume (m ³) | Weight rocks (kg) | Size (WxHxD) | Side (mm) | Front (mm) | Back (mm) | Ceiling (mm) | Floor (mm) | Suitable control panel | Installation |
|---------------------|----------|-------------|--------------------------------|-------------------|--------------|-----------|------------|-----------|--------------|------------|---------------------------|----------------|
| Laava 901 graphite | 000915 | 9.0 | 8-13 | 60 | 540x730x500 | 80 | 50 | 110 | 1200 | 0 | WE-40 + Pure / Elite Free | Floor standing |
| Laava 1051 graphite | 000916 | 10.5 | 9-15 | 60 | 540x730x500 | 80 | 50 | 110 | 1200 | 0 | WE-40 + Pure / Elite Free | Floor standing |
| Laava 1201 graphite | 000917 | 12.0 | 10-18 | 60 | 540x730x500 | 65 | 65 | 65 | 1350 | 0 | WE-40 + Pure / Elite Free | Floor standing |
| Laava 1501 graphite | 000918 | 15.0 | 14-24 | 60 | 540x730x500 | 65 | 65 | 65 | 1350 | 0 | WE-40 + Pure / Elite Free | Floor standing |
| SKLE 901 chrome | 000901 | 9.0 | 8-13 | 60 | 510x700x475 | 80 | 80 | 110 | 1200 | 0 | WE-40 + Pure / Elite Free | Floor standing |
| SKLE 1051 chrome | 000902 | 10.5 | 9-15 | 60 | 510x700x475 | 80 | 80 | 110 | 1200 | 0 | WE-40 + Pure / Elite Free | Floor standing |
| SKLE 1201 chrome | 000903 | 12.0 | 10-18 | 60 | 510x700x475 | 120 | 120 | 120 | 1400 | 0 | WE-40 + Pure / Elite Free | Floor standing |
| SKLE 1501 chrome | 000904 | 15.0 | 14-24 | 60 | 510x700x475 | 120 | 120 | 120 | 1400 | 0 | WE-40 + Pure / Elite Free | Floor standing |
| Magma 181 graphite | 000911 | 18.0 | 18-30 | 80 | 900x715x520 | 140 | 160 | 160 | 1400 | 0 | WE-50 + Pure / Elite Free | Floor standing |
| Magma 210 graphite | 000912 | 21.0 | 24-36 | 80 | 900x715x520 | 140 | 160 | 160 | 1400 | 0 | WE-50 + Pure / Elite Free | Floor standing |
| Magma 260 graphite | 000913 | 26.0 | 30-46 | 80 | 900x715x520 | 140 | 160 | 160 | 1500 | 0 | WE-50 + Pure / Elite Free | Floor standing |
| Magma 262 graphite | 000914 | 26.0 | 30-46 | 80 | 900x715x520 | 140 | 160 | 160 | 1500 | 0 | WE-50 + Pure / Elite Free | Floor standing |
| SKLA 181 chrome | 000905 | 18.0 | 18-30 | 80 | 880x700x510 | 140 | 160 | 160 | 1400 | 0 | WE-50 + Pure / Elite Free | Floor standing |
| SKLA 210 chrome | 000906 | 21.0 | 24-36 | 80 | 880x700x510 | 140 | 160 | 160 | 1400 | 0 | WE-50 + Pure / Elite Free | Floor standing |
| SKLA 260 chrome | 000907 | 26.0 | 30-45 | 80 | 880x700x510 | 140 | 160 | 160 | 1500 | 0 | WE-50 + Pure / Elite Free | Floor standing |
| SKLA 262 chrome | 000910 | 26.0 | 30-46 | 80 | 880x700x510 | 140 | 160 | 160 | 1500 | 0 | WE-50 + Pure / Elite Free | Floor standing |



Steam Generators



| Product | Item no. | Output (kW) | Size (WxHxD) |
|----------------|----------|-------------|-----------------|
| Helo Steam | 002100 | 3.4 | 636 x 380 x 164 |
| Helo Steam | 002101 | 4.7 | 636 x 380 x 164 |
| Helo Steam | 002102 | 6 | 636 x 380 x 164 |
| Helo Steam | 002103 | 7.7 | 636 x 380 x 164 |
| Helo Steam Pro | 002104 | 9.5 | 636 x 380 x 164 |
| Helo Steam Pro | 002105 | 12 | 636 x 380 x 164 |
| Helo Steam Pro | 002106 | 14 | 636 x 380 x 164 |
| Helo Steam Pro | 002107 | 16 | 636 x 380 x 164 |



Helo Steam

Engineered for minimal use of electricity and water but provide maximum enjoyment. A steam generator that suits residential use that comes with two aux outputs for fragrance or salt and resettable high limit switch.

Available add-ons are new drain valve and automatic flush.



Helo Steam Pro

An advanced steam generator for commercial use with a lot of smart features included like; standby function, automatic flush, safety flush, two aux outputs for fragrance/salt, ganging with RJ connectors (1+2units), resettable high limit switch, new drain valve.

Push button for activation from standby is available as add-on.



Pure

Comes with the standard digital touch control panel for ease of use and convenience. Let's you set temperature and time.



Elite Free

Gives a quicker heat up time and lets you set the exact percentage of humidity for full control. Cloud connectivity for maximum advantage and comfort is included.

Accessories

FRAGRANCE PUMP

Available as an option for your steam generator and connects simply to the outlet pipe. Add any 5-litre concentrated fragrance. Item no. 0038130

CONTAINER FOR ESSENCE PUMP 20L

Item no. 0038132

ADAPTER FOR CONTAINER

Item no. 0038131



Control Panels



Pure

Control your sauna with a smart control panel. The Pure stands for simplicity and functionality. The elegant, compact design of the Pure control panel makes it the go-to choice for those who value functionality and simplicity.

The thin black control lets you set the lighting, temperature and sauna time easily with only a few touches. Of course, choosing the start time up to ten hours in advance means you can step into a wonderfully hot sauna or steam as soon as you get home. (Door switch is included with Pure control panel.)

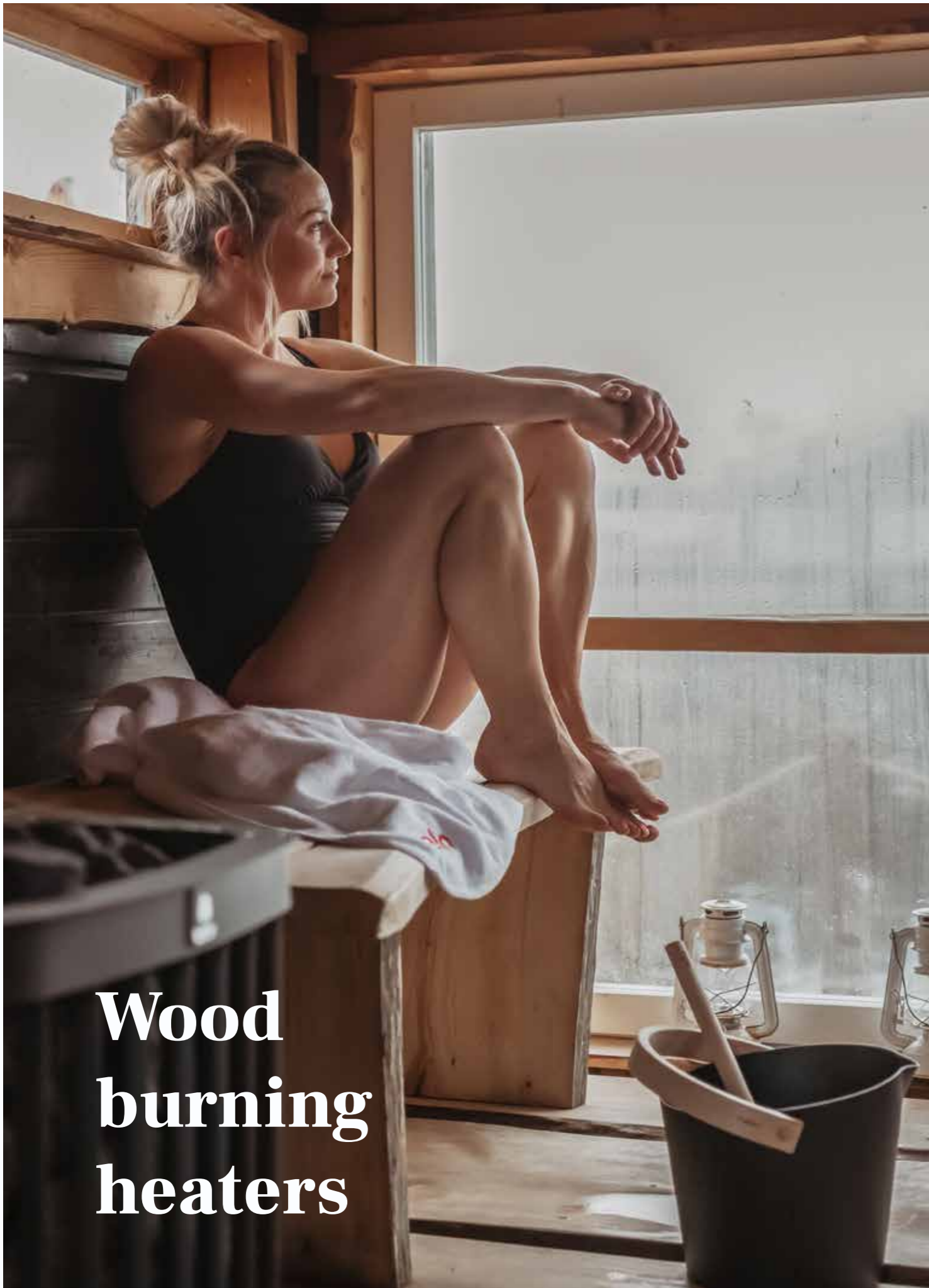


Elite Free

The new control panel Elite Free has been updated with cloud based functionality so you can control your sauna from anywhere! Why not have it ready when you come in from the ski slope or an exhausting car ride on the way home from work.

It is packed with advanced features, thanks to its internal processor and operating system. In addition to highly personalized settings, the Elite Free can be individually programmed according to your own schedule.

Add features such as auxiliary fans, fragrance pumps or lights – the Elite Free control panel handles it all with clear and concise precision. The 4.5-inch touch screen delivers real-time status on every aspect of your sauna and steam bath. Door switch is included with Elite Free control panel to ensure the cloud functionality.



Wood burning heaters



Kastor Karhu

The stylish lines and chrome front panel of the wood burning heater Kastor Karhu are suitable for all sauna interiors. Intelligent solutions produce maximum heating power with as little wood as possible and have impressive heat storage properties. Kastor Karhu is a CE-marked stove.

Kastor Karhu heaters have different models suitable from 12 up to 40 cubic meter sauna rooms:

KARHU HOME: 8-20m³ sauna rooms

KARHU 22: 12-22m³ sauna rooms

KARHU 30: 20-30m³ sauna rooms

KARHU 40: 30-40m³ sauna rooms

All Kastor Karhu heaters have adjustable legs, and the inside diameter of the flue is 115 mm. A protective wall and a protective base are available as accessories.



Kastor Karhu V

The wood burning Kastor Karhu V -model heaters have integrated water tank that is located at the right, left or front of the heater. Kastor Karhu V -heaters have suitable models for 12-40 cubic meter sauna rooms.

The stylish lines and chrome front panel of the wood burning heater Kastor Karhu are suitable for all sauna interiors. Intelligent solutions produce maximum heating power with as little wood as possible and have impressive heat storage properties. Kastor Karhu is a CE-marked stove.

All Kastor Karhu heaters have adjustable legs, and the inside diameter of the flue is 115 mm. A protective wall and a protective base are available as accessories. What could be more relaxing than watching the blaze of flames in the warmth of the atmospheric Kastor Karhu?

Kastor Karhu V -heaters can be easily identified from these abbreviations:

-VV: Water tank located on the left side

-VO: Water tank located on the right side



Kastor Saga



The wood burning heater Kastor Saga and its praiseworthy stone amount of 130/180kg provides wave after wave the softest, most comfortable heat while reserving heat effectively. Its forged steel bars are made to last for years of flawless performance.

The rugged style of Kastor Saga makes it an eye-catcher and a centrepiece for your sauna interior. The Saga heater guarantees the perfect atmosphere for your sauna – it is the brand of Finland’s oldest sauna industry leader after all.

Every Kastor Saga heater is CE-marked. Kastor Saga -series offers efficiently warm and soft steam for 12-30 cubic meter sauna rooms. The inside diameter of the flue is 115 mm.

A chimney basket and protective base are available as an accessory.

Kastor Karhu T



Kastor Karhu T -heater: A fireplace heater also known as a tunnel heater, is a combination of a wood heater and a fireplace, where the heater is in the sauna and the fireplace door on the other side of the wall. So, you can first enjoy the steam on the sauna side and continue the atmosphere by the fireplace in the fireplace room, dressing room or living room. The fireplace located outside the sauna also heats the spaces outside the sauna and keeps the sauna clean when the debris coming from the firewood does not end up on the sauna floor.

In addition to practicality, of course, the heater looks great. The beautiful lines of the heater are suitable for many tastes and sauna interiors. The careful design of the firebox and stone space makes the heater light without compromising on its excellent fire properties.

Every Kastor Karhu T- heater is CE-marked, has adjustable legs and has 115 mm inner flue diameter. Kastor Karhu T -heaters have different models suitable from 12 up to 30 cubic meter sauna rooms.

The frame is not included in the price of the Kastor Karhu 22/30 T models. Available as an accessory.





Front Frames For T-Models

Front frames are mainly designed to be used in T-model tunnel heaters. The frames are easy to install and is a finishing touch to the style of your home.

The sleek and modern design of the front frames complements the overall look of the Kastor Karhu T and Kastor Saga T models. The frame is not included in the price of the Kastor Karhu 22/30 T models. Available as an accessory.

Kastor Saga T

Kastor Saga T -heater: A fireplace heater also known as a tunnel heater, is a combination of a wood heater and a fireplace, where the heater is in the sauna and the fireplace door on the other side of the wall. So, you can first enjoy the steam on the sauna side and continue the atmosphere by the fireplace in the fireplace room, dressing room or living room. The fireplace located outside the sauna also heats the spaces outside the sauna and keeps the sauna clean when the debris coming from the firewood does not end up on the sauna floor.

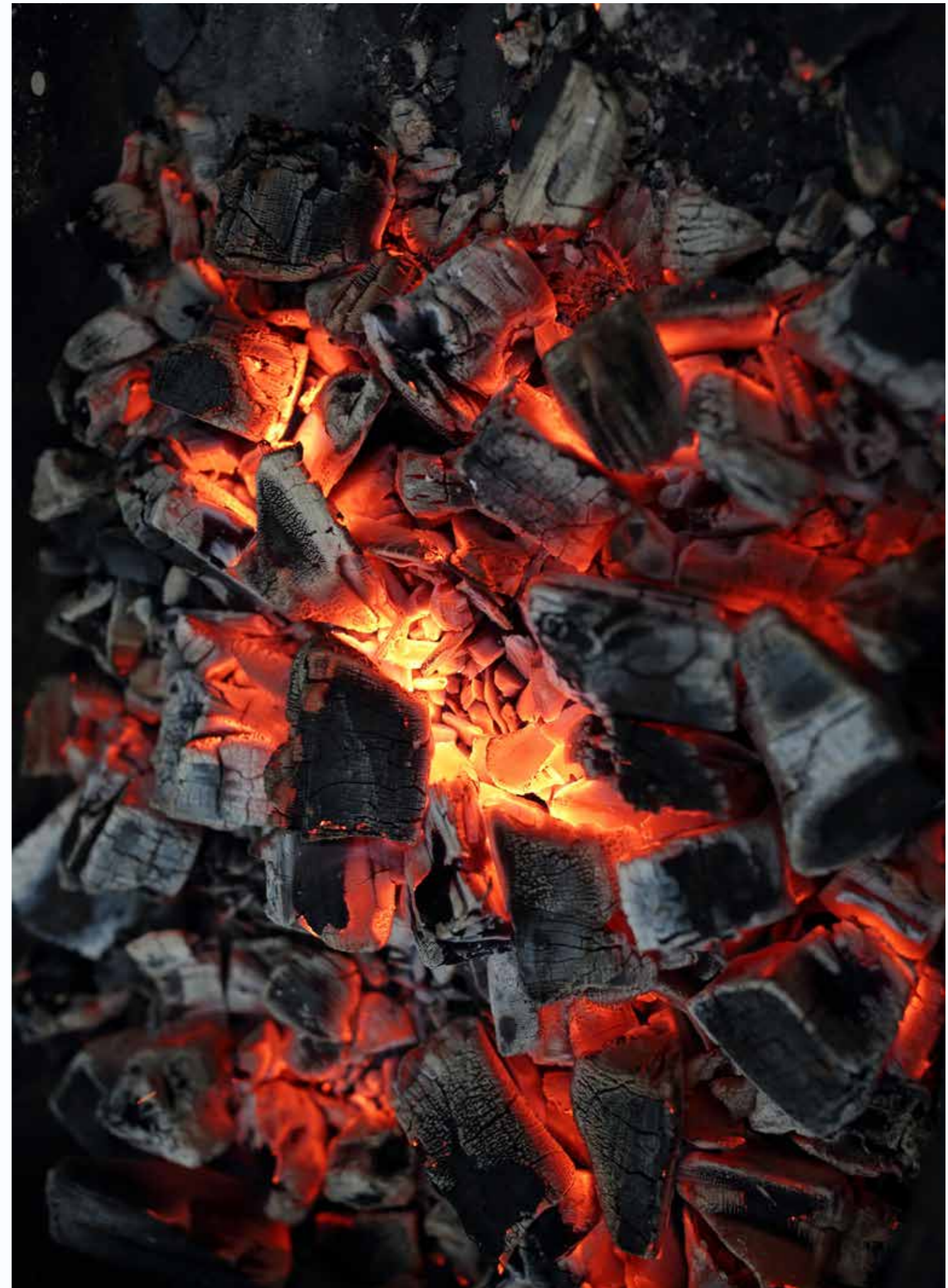
The wood burning heater Kastor Saga T and its praiseworthy stone amount of 140/190kg provides wave after wave the softest, most comfortable heat while reserving heat effectively.

Every Kastor Saga T heater is CE-marked and offers efficiently warm and soft steam for 12 up to 30 cubic meter sauna rooms. The inside diameter of the flue is 115mm. Saga T does not include the front frame, a stone basket or a protective base. They are available purchase as an accessory.

Kastor Karhu Pata

Wood-burning water kettle Kastor Karhu Pata is designed to complement other wood-burning stoves in the Karhu collection.

Kastor Karhu Pata has a large 60-liter water tank and adjustable legs. A protective base is available as an accessory.



| Product | Item no. | Output (kW) | Sauna volume (m ³) | Weight heater +rocks(kg) | Size (mm) | Side (mm) | Front (mm) | Ceiling (mm) | Back (mm) | Water tank volume (Lt) | Sauna room min height (mm) | Max.lengt of fire wood (mm) |
|-------------|----------|-------------|--------------------------------|--------------------------|---------------------|-----------|------------|--------------|-----------|------------------------|----------------------------|-----------------------------|
| Karhu Home | 084152 | 12 | 8-20 | 45 + 35-40 | 435 x 475 x 730 | 300 | 500 | 1300 | 300 | - | 2100 | 380 |
| Karhu 22 | 289083 | 14 | 12-22 | 61 + 25-30 | 450 x 485 x 785 | 300 | 500 | 1240 | 300 | - | 2100 | 380 |
| Karhu 30 | 289086 | 17 | 20-30 | 84 + 35-40 | 490 x 485 x 915 | 300 | 500 | 1310 | 300 | - | 2300 | 380 |
| Karhu 40 | 289091 | 15 | 30-40 | 125 + 50-55 | 580 x 585 x 925 | 300 | 500 | 1300 | 300 | - | 2300 | 450 |
| Karhu 22 VO | 289084 | 14 | 12-22 | 67 + 25-30 | 620 x 485 x 785 | 300 / 150 | 500 | 1240 | 300 | 28 | 2100 | 380 |
| Karhu 22 VV | 289085 | 14 | 12-22 | 67 + 25-30 | 620 x 485 x 785 | 300 / 150 | 500 | 1240 | 300 | 28 | 2100 | 380 |
| Karhu 30 VO | 289087 | 17 | 20-30 | 90 + 35-40 | 660 x 485 x 915 | 300 / 150 | 500 | 1310 | 300 | 28 | 2300 | 380 |
| Karhu 30 VV | 289088 | 17 | 20-30 | 90 + 35-40 | 660 x 485 x 915 | 300 / 150 | 500 | 1310 | 300 | 28 | 2300 | 380 |
| Karhu 40 VO | 289092 | 15 | 30-40 | 131 + 50-55 | 740 x 585 x 925 | 300 / 150 | 500 | 1300 | 300 | 28 | 2300 | 450 |
| Karhu 40 VV | 289093 | 15 | 30-40 | 131 + 50-55 | 740 x 585 x 925 | 300 / 150 | 500 | 1300 | 300 | 28 | 2300 | 450 |
| Karhu 22 T | 289094 | 14 | 12-22 | 95 + 25-30 | 450 x 485/785 x 785 | 300 | 500 | 1240 | 50 | - | 2100 | 380 |
| Karhu 30 T | 289095 | 17 | 20-30 | 120 + 35-40 | 490 x 485/785 x 915 | 300 | 500 | 1310 | 50 | - | 2300 | 380 |
| Karhu Pata | 089650 | 15 | - | - | 410 x 570 x 775 | 500 | 500 | 1000 | 500 | 60 | | |
| Saga 22 | 289089 | 16 | 12-22 | 115 + 130-140 | 600 x 585 x 825 | 250 | 500 | 1400 | 250 | - | 2300 | 380 |
| Saga 30 | 289090 | 17 | 20-30 | 140 + 180-190 | 675 x 585 x 930 | 250 | 500 | 1300 | 250 | - | 2300 | 380 |
| Saga 22 T | 289097 | 16 | 12-22 | 115 + 130-140 | 600 x 585 x 825 | 250 | 500 | 1400 | 50 | - | 2300 | 380 |
| Saga 30 T | 289098 | 17 | 20-30 | 140 + 180-190 | 675 x 585 x 930 | 250 | 500 | 1300 | 50 | - | 2300 | 380 |



Accessories for Karhu heaters



Safety Plates

The safety plate serves as protection for combustible floors, allowing for a reduction in the safety distance required for stove products.



Protecting panels

The protective walls minimize the required safety distance between the heater and the wall to prevent any risk of fire caused by radiating heat and ensure a safe sauna experience.

| Product | Item no. | Dimensions (mm) |
|---|----------|-----------------|
| Karhu Home protective wall | 289079 | 540 x 565 x 760 |
| Karhu 20 ES protective wall | 289081 | 540 x 770 x 760 |
| Karhu 22 protective wall | 289101 | 565 x 595 x 830 |
| Karhu 22 VO/VV protective wall | 289099 | 730 x 592 x 830 |
| Karhu 30 protective wall | 289049 | 610 x 595 x 970 |
| Karhu 30 VO/VV protective wall | 289100 | 770 x 595 x 970 |
| Karhu 40 protective wall | 289050 | 690 x 685 x 970 |
| Karhu 40 VO/VV protective wall | 289102 | 850 x 658 x 850 |
| Safety plate (Karhu 20, Karhu 22, Karhu 30) | 091004 | 532 x 50 x 532 |
| Safety plate (Saga, Karhu 40, Karhu Pata) | 289051 | 607 x 50 x 607 |
| Front frame for T models chrome | 091002 | 695 x 60 x 670 |
| Front frame for T models black | 098128 | 640 x 60 x 645 |



Infrared panels



Elevate the traditional sauna experience by incorporating infrared panels, allowing you to enjoy the deep heat they provide. Whether relishing the benefits of an infrared sauna individually or in conjunction with a traditional sauna, Helo's infrared panels can be seamlessly integrated into your existing sauna room.

Separately sold backrest grid, ensuring an appropriate distance between your back and the heating elements. This specific product, IR-panel B, comes in a sleek black color.



Key Features

Two sauna experiences in one room, for individual or simultaneous enjoyment. Infrared sauna health benefits stem from the profound warming effect of infrared heat on the body.

Invisible light waves penetrate the body in the infrared sauna, promoting increased metabolism, blood circulation, pain relief, calorie expenditure, skin improvement, stress reduction, and an overall sense of well-being.

Accelerates body recovery, making it an excellent support for an active lifestyle.

| Product | Item no. | Size in mm | Power/ Voltage |
|--------------------------|----------|---------------|----------------|
| Glass Infra panel, black | 0038961 | 910 X 310 mm | 900W, 230V |
| Glass Infra panel, grey | 0038962 | 910 X 310 mm | 900W, 230V |
| Backrest, vertical | 0038971 | 382x809x59 mm | |
| Backrest, horizontal | 0038972 | 980x330x59 mm | |
| Control panel 60 minutes | 001560 | | |





Black **Brown** **Grey** **Natural** **White**

Taika panels are available in two different forms; horizontal and square and comes in a number of wood finishes.

| Product | Size in mm | Item no. |
|---------|-----------------|----------|
| Black | 12 x 196 x 3030 | 0038608 |
| White | 12 x 196 x 3030 | 0038623 |
| Natural | 12 x 196 x 3030 | 0038633 |
| Grey | 12 x 196 x 3030 | 0038663 |
| Brown | 12 x 196 x 3030 | 0038672 |
| Black | 12 x 196 x 1500 | 0038668 |
| White | 12 x 196 x 1500 | 0038669 |
| Natural | 12 x 196 x 1500 | 0038670 |
| Grey | 12 x 196 x 1500 | 0038671 |
| Brown | 12 x 196 x 1500 | 0038674 |
| Black | 12 x 376 x 376 | 0038609 |
| White | 12 x 376 x 376 | 0038627 |
| Natural | 12 x 376 x 376 | 0038637 |
| Grey | 12 x 376 x 376 | 0038667 |
| Brown | 12 x 376 x 376 | 0038673 |



This new series has been developed in collaboration with Italian designer, Paola Garatto. The beautiful diagonal shape is inspired by the water waves. It includes bucket, ladle, thermometer, hygrometer and hourglass and is offered in beautiful matt Black or glamorous Silver grey.

It features aluminium which is anodised and sand-blasted for a real quality finish and longevity. The handle on the bucket is light birch, reinforced with aspen for strength.

In addition to the stylish design, the bucket has a clever functional spout to enable more accurate pouring of water – ideal for filling the water tank on Helo heaters.



| Product | Item no. |
|-----------------|----------|
| BRILLIANT BLACK | |
| Bucket | 3817036 |
| Ladle | 3817038 |
| Hygrometer | 3817051 |
| Thermometer | 3817049 |
| Hourglass | 3817026 |

| Product | Item no. |
|------------------|----------|
| BRILLIANT SILVER | |
| Bucket | 3817037 |
| Ladle | 3817039 |
| Hygrometer | 3817052 |
| Thermometer | 3817050 |
| Hourglass | 3817027 |

helo KASTOR

THE GENUINE FINNISH SAUNA

Sauna360 Oy

Pohjoinen Pallbontie 1, 10900 Hanko
www.helosauna.com

SALES

Tel: +358 207 560 300
Email: sales.fi@sauna360.com

TECHNICAL SUPPORT AND AFTER SALES

Tel: +358 207 560 332
Email: aftersales.fi@sauna360.com