

## Installation and User Instructions:

# HELO Steam Generator HSAJ-310 / HSAJ-310 E

Your IDO shower cabin has been equipped with a high quality steamer. The installation instructions have to be read carefully and installation has to be undertaken based on these in order to be able to run the steam generator at its optimum performance.

### Contents of the Installation and User Instructions:

#### Installation instructions

|                                     |         |
|-------------------------------------|---------|
| Contents delivered                  | page 2. |
| Preparations                        | page 3. |
| Installation of the steam generator | page 3. |
| Water and drain connection          | page 4. |
| Connecting the electricity          | page 4. |
| Replacement of the mounting plate   | page 5. |

#### User instructions

|  |         |
|--|---------|
| Before use   | page 6. |
| Operating the steam generator                      | page 6. |
| Advice and instructions relating to the steam bath | page 7. |

#### Maintenance

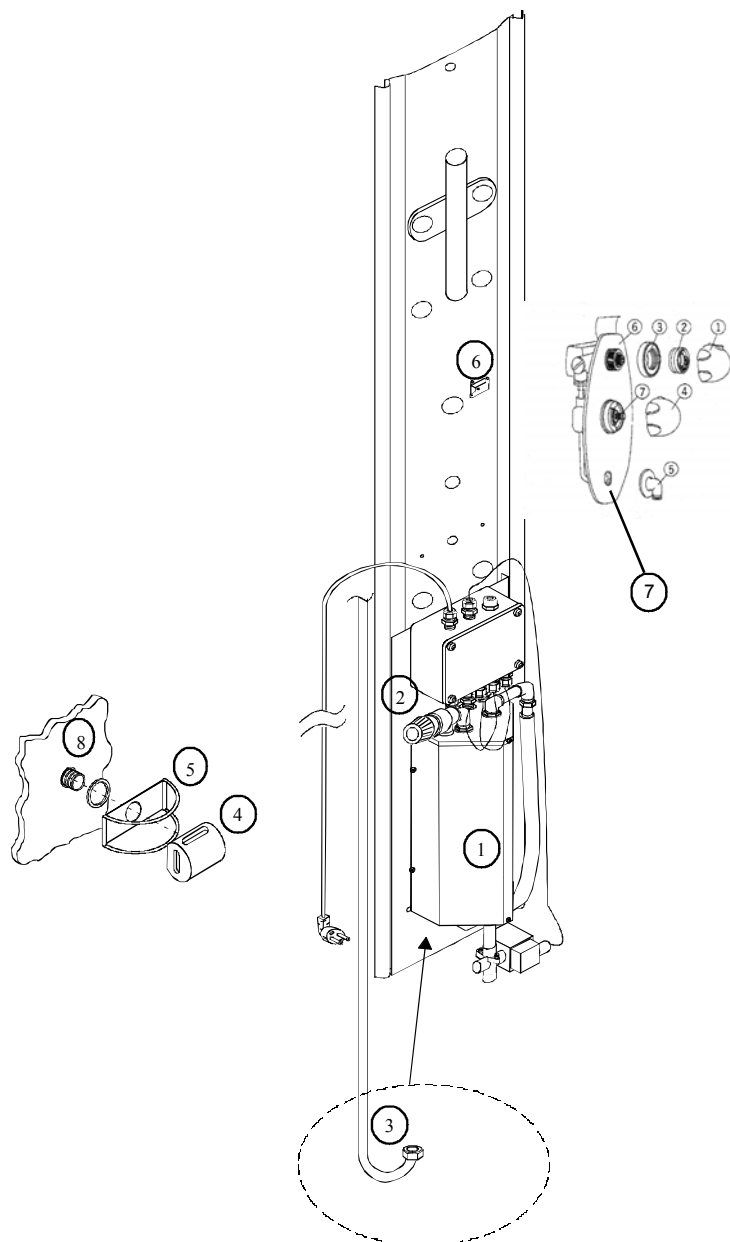
|                                   |          |
|-----------------------------------|----------|
| Desacaling the tank               | page 8.  |
| Testing the hardness of the water | page 9.  |
| Spare parts list                  | page 10. |
| Circuit diagram                   | page 11. |
| Warranty procedure                | page 12. |



314 SHS 62 A

**The delivery includes:**

- 1 1 steam generator HSAJ-310 3100W / 230V 1N~16A
- 2 1 installation plate for the corner of the steam cabin
- 3 1 PEX water hose  $\frac{1}{2}$ " –  $\frac{3}{4}$ "
- 4 1 steam nozzle
- 5 1 steam nozzle cover
- 6 1 control button with an indicator light
- 7 1 mounting plate for the control button
- 8 1 washer
- 9 1 roll of sealing tape
- 10 1 draining hose
- 11 1 hose clamp for the draining hose



**Preparations:**

The shower and its basin are prepared as follows before the installation of the steamer.

Ensure that the shower cabin has a dome top and that all the sealing strips have been installed correctly (see the installation instructions for the shower cabin).

Open the upper hole punched in the corner column of the shower cabin. The steam nozzle connection is fed through the hole.

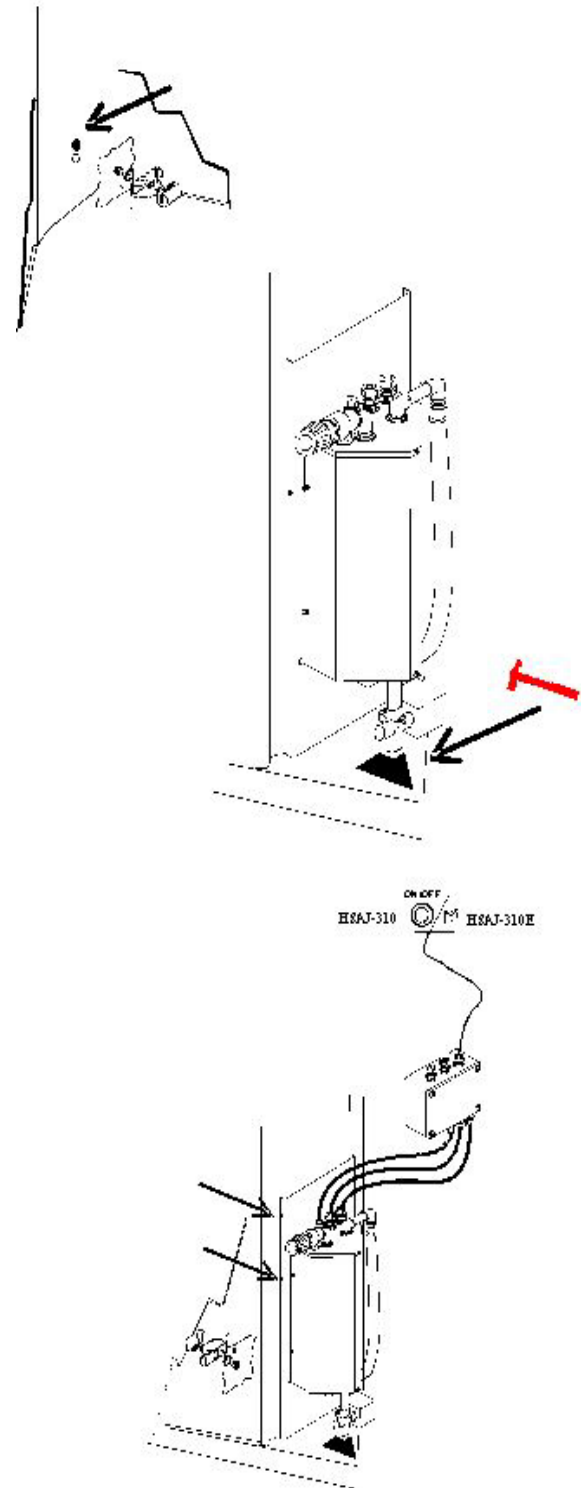
Open the hole which is located in the basin beyond the mounting column. Use a hammer and a chisel. The hose is fed through the hole from the draining valve to the floor drain valve below the basin. Round off the sharp edges which could damage the water drain hose.

**Installation of the steam generator:**

Place the installation module containing the steam generator against the corner column. Press the die cuts on the top in the edge to be underneath the corner column edges. Align the passing-through hole of the steam nozzle located in the module with the upper punched hole of the corner column. Bend the strips on the side of the module underneath the edges of the corner columns.

Fix the module tightly to the corner column using the steam nozzle. Place the washer in between the corner column and steam nozzle cover. Turn the steam nozzle (1/2" external thread) to be closed inside the shower cabin. Align the steam nozzle opening using the supplied tape to the right side when looking from the door.

Fix the control button to the mounting plate (plate replacement instructions on page 5). Attach the plug to the connection in the cable end.



### Water and drain connection:

Pass the water drain hose via the hole in the base of the basin down to the drain. Connect the supplied PEX water pipe to the steam generator (3/4") and the manual drain (1/2").

**Note! Follow the local regulations relating to the connection of domestic appliances to the water system.**

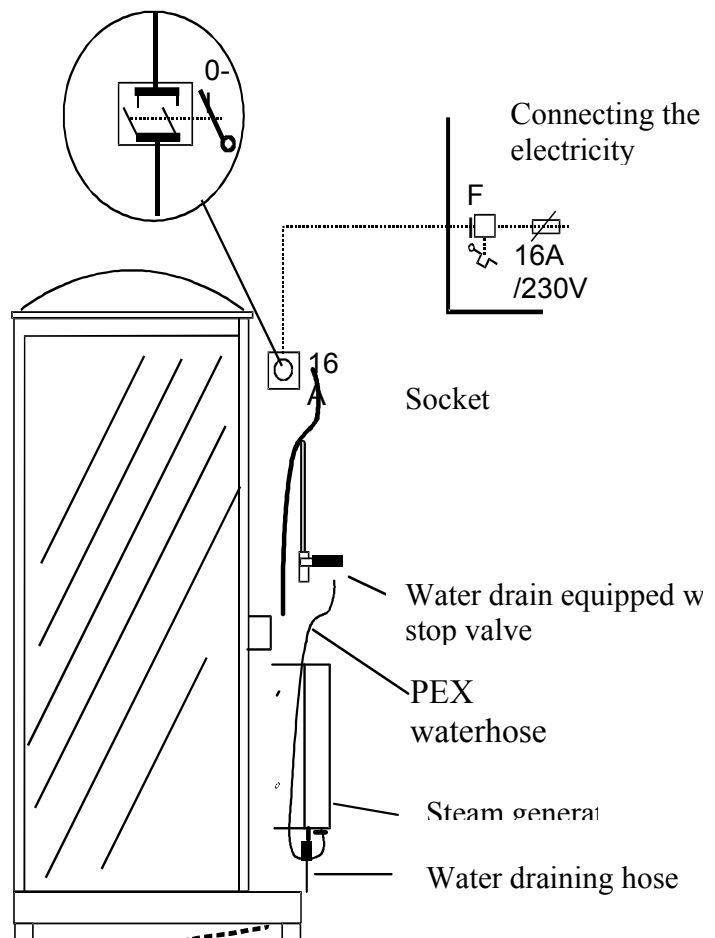
**Note! The water hose can only be fixed to the steam generator manually.** The use of pipe pliers or an equivalent tool may damage the inside of the generator.

### Electrical connection:

Using the electric plug belonging to it, the generator can be connected to an earthed socket which has been protected with a current fault protection switch. The suitability of the socket has to be ensured when the steam generator is installed into an old construction.

If the electric plug is removed and the steamer is connected to be semi-fixed, it has to be installed with a bi-polar switch which has a contact opening of 3 mm at the minimum. In this way the steam generator can be made free of electric current when it is maintained or when it is not going to be used for a long time.

**Note! Only an appropriately trained person can undertake the installation and repairs in accordance with the current regulations relating to electricity.**



The mounting plate has to be replaced when the steam generator is installed afterwards in the ready-built shower cabin.

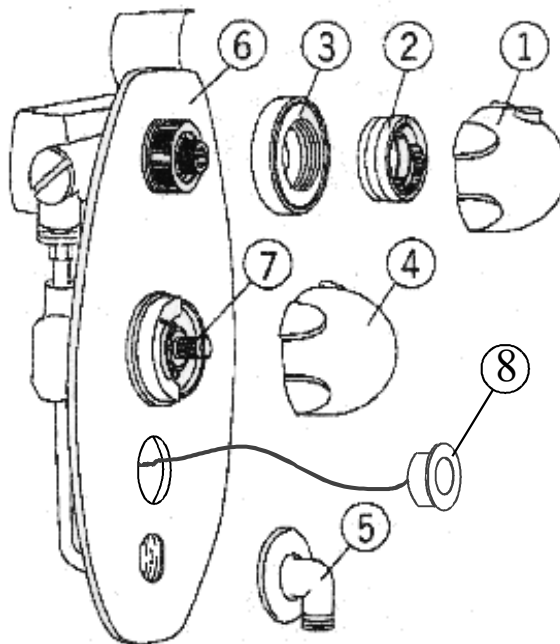
### **Replacement of the mounting plate**

Removal of the old mounting plate:

- 1 Pull the thermostat knob (1) out.
- 2 Pull the limiter (2) out.
- 3 Unscrew part (3).
- 4 Pull the operating valve (4) out.
- 5 Unscrew the joint part (5).
- 6 Remove the seal (6) and install it in the new mounting plate.

Installation of the new mounting plate.

- 1 Place the new mounting plate so that the operational wedge axle (7) fits the axle.
- 2 Screw part (3) back.
- 3 Replace the temperature limiter (2).
- 4 Press the thermostat knob (1) back into its place.
- 5 Press the operation valve knob (4) back into its place.
- 6 Screw the joint part (5) back into its place.
- 7 Install the steam generator push button (8), spread the seal mass onto the back and tighten the nut lightly.



## USER INSTRUCTIONS

Before use:

The suitability of the water connection and the electricity connection has to be ensured before use. Also the seals of the shower cabin have to be checked.

### **Use of the steam generator:**

Connect the current to the steam generator using a current plug or an external switch and open the water input.

Start the steam generator by pressing the control button. The indicator light is lit in the control button.

Steam starts to flow from the steam nozzle after approximately 5 - 6 minutes. At first some condensed water is formed in the steam pipe flowing from the steam nozzle. This stop when the hose and the steam nozzle reach the operating temperature.

### **WARNING!**

**The temperature of the steam from the steam nozzle is almost 100 C°. Touching the steam or the steam nozzle may cause burns.**

The steam generator has a 30 minute timer which cuts off boiling automatically. Then steam bathing can be continued by pressing the control button once. Steam bathing can also be ended before the set 30 minutes by pressing the control button once; then the steam generator stops and the indicator light is gone out.

Stopping the steamer starts an approximately 15 minutes long cooling period and then the steam generator starts the draining and rinsing program. The draining program cannot be interrupted. This program lasts a few minutes.

Once the draining and rinsing has ended the steam generator will be in standby position. A new steam bath can be started using the control button.

**Advice and instructions relating to the steam bath:**

The relative moisture of the steam bath is 100 percent and a suitable temperature for a bath is approximately 45 degrees. A steam bath relaxes and reduces stress. The moist and warm air of a steam bath intensifies the surface blood circulation and also assists in sleeping problems.

The following general advice applies for steam baths:

- Drink water before the bath.
- Wash up in the shower before the steam bath. (The shower can be used when the steamer is operating.)
- Normal bathing time is 10-20 minutes.
- Wash up after the steam bath.
- Drink something after the steam bath.
- Aromatic scents or herbs, such as eucalyptus, can be used in the steam bath. (The scents or herbs are placed on the top of the steam nozzle before starting the steam generator.)

**IF YOU ARE ILL, CONVALESCING OR PREGNANT CONSULT YOUR DOCTOR BEFORE USING THE STEAM BATH.**

## **Maintenance:**

The main maintenance procedure is the draining and rinsing of the tank always after the use of the steamer. Steam generator HSAJ-310: the tank is drained automatically 15 minutes after the end of the steam bath. Then the program rinses the tank automatically. If draining and rinsing does not start automatically contact the local dealer.

If the water has plenty of chalk, iron or some other impurities, they can cover the heating element and the water level sensor in the tank. If coloured water flows from the steam nozzle or if the amount of water flowing from the steam nozzle during the steam bath increases significantly, the tank and the water level sensor have to be cleaned manually.

If you have any enquiries contact the dealer or the maintenance centre.

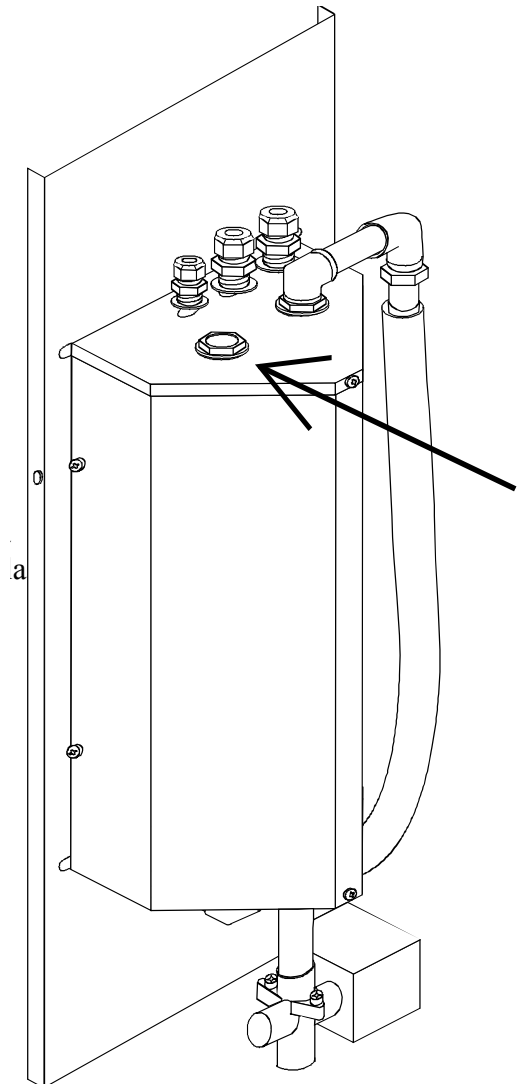
### **Removal of chalk from the tank:**

As the quality of water varies significantly in the areas of different users, the chalk content (hardness) of the water has to be measured using the supplied test indicator in accordance with the instructions on the test package.

The tank of the steamer has to be cleaned of chalk at the intervals mentioned in the test package or in any case at least once or twice every year.

Start the cleaning of the steam generator tank of chalk by screwing the safety valve out and by filling the tank through the hole in the valve with a solution which contains one litre of warm water and citric acid powder supplied with the steam generator. Then screw the safety valve back (and seal it, if necessary, with tape), start the steam generator and let the water boil for about 10 - 15 minutes.


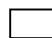
Stop the steam generator by pressing the button. The program drains and rinses the tank automatically after 15 minutes. Rinse the tank thoroughly two or three times by starting the steam generator and waiting about 5 minutes until the water boils and then draining and rinsing the tank. The procedure can be repeated if the citric smell is still obvious in the next steam bath. However, any possible citric smell is not dangerous.



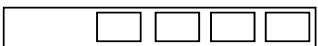
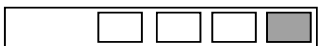
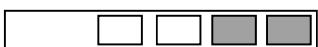
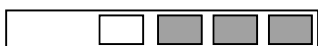



**NOTE! The measuring of the water hardness and the recommended maintenance procedures must be undertaken in order to have a valid warranty.**

**WATER HARDNESS LEVEL TEST STRIP**

 = RED  
 = GREEN

Test method:  
Immerse a teaspoon into water ( for approx. 1 second ).  
Shake excess water from the strip.  
Compare the colour code after about 1 minute.

|    |   |         |                               |
|----|---|---------|-------------------------------|
| a) |  | < 5 TH  | < 3 °dH extremely soft water  |
| b) |  | > 7 TH  | > 4 °dH soft water            |
| c) |  | > 12 TH | > 7 °dH medium hard water     |
| d) |  | > 25 TH | > 14 °dH hard water           |
| e) |  | > 37 TH | > 21 °dH extremely hard water |

- a) Chalk removal treatment after 500 hours of use.
- b) Chalk removal treatment after 350 hours of use.
- c) Chalk removal treatment after 250 hours of use.
- d) Chalk removal treatment after 50 hours of use. Installation of the chalk removal treatment equipment is recommended.
- e) Install the chalk removal equipment and test water hardness.

**NOTE! THE EQUIPMENT TANK HAS TO BE DRAINED AFTER EACH USE.**  
( Chalk removal does not replace the draining of the tank ).

Product code: 7819515

Citric acid for chalk removal in the steam generator and the Steamy tank.

Add 50g of citric acid to approx. 1 litre of water and mix well.

Add the solution to the tank, start the equipment and let it boil for about 10 - 15 minutes.

Empty the of water. Start the tank again and let it boil for about 3 minutes and then empty the tank of water. Repeat this about 3 - 5 times.

Chalk removal has to be made in accordance with the instructions in the user instructions.

### Spare parts list:

#### LABEL

5916202 Circuit Card OLEA 46

7819708 Safety Valve  $\frac{1}{2}$ " – 0.5 bar

7319595 Water hose  $\frac{1}{2}$ " –  $\frac{3}{4}$ "

4310140 Control button HSZ-310

4310141 Control button HSZ-310 E

4310138 Water level

207668 Heat Resistance SEPD176 1567W

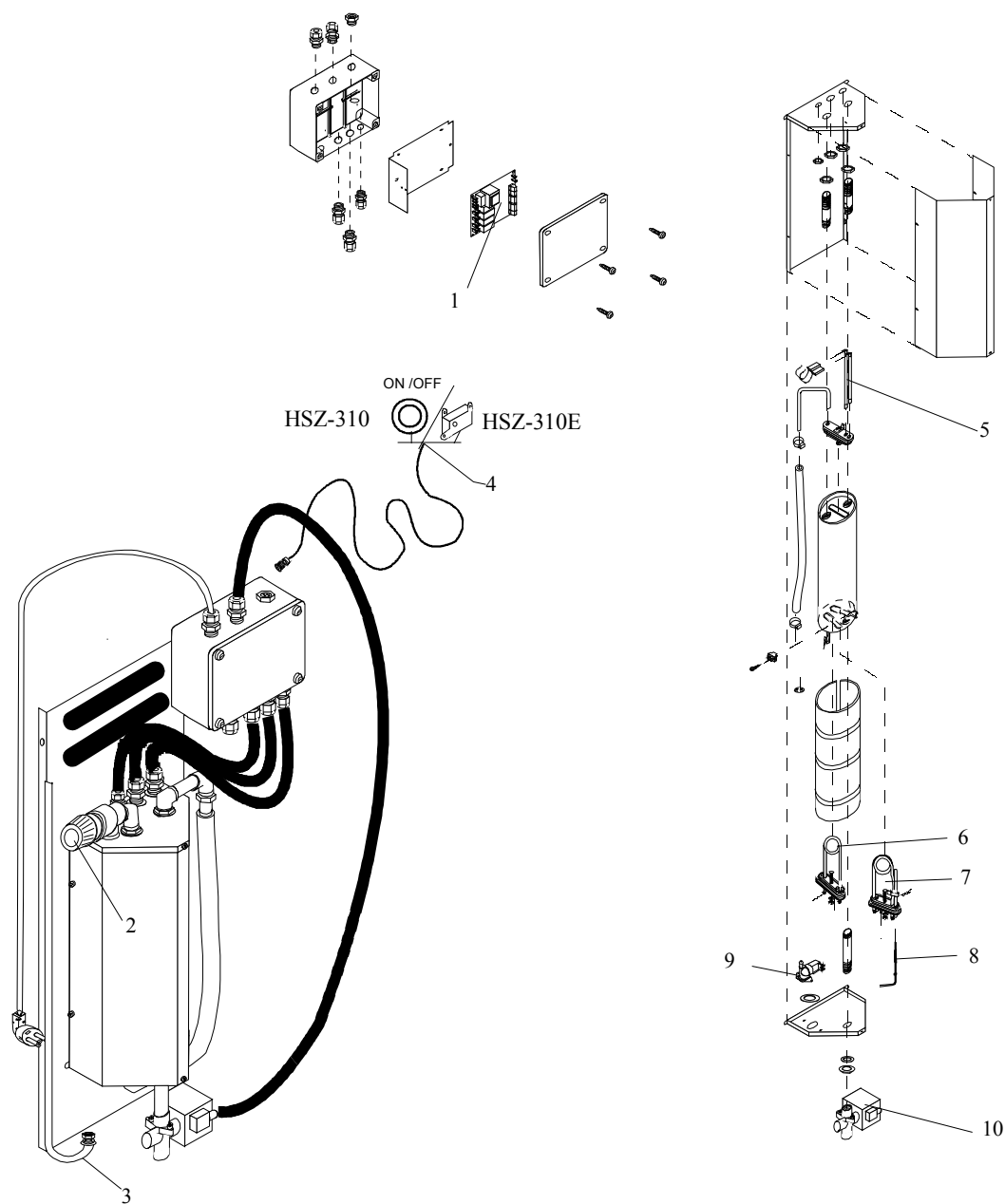
5207669 Heat Resistance SEPD177 1567W

7801706 Heat fuse for the resistance

7819507 Magnet valve filling

7819503 Magnet valve emptying

7819604 Steam nozzle

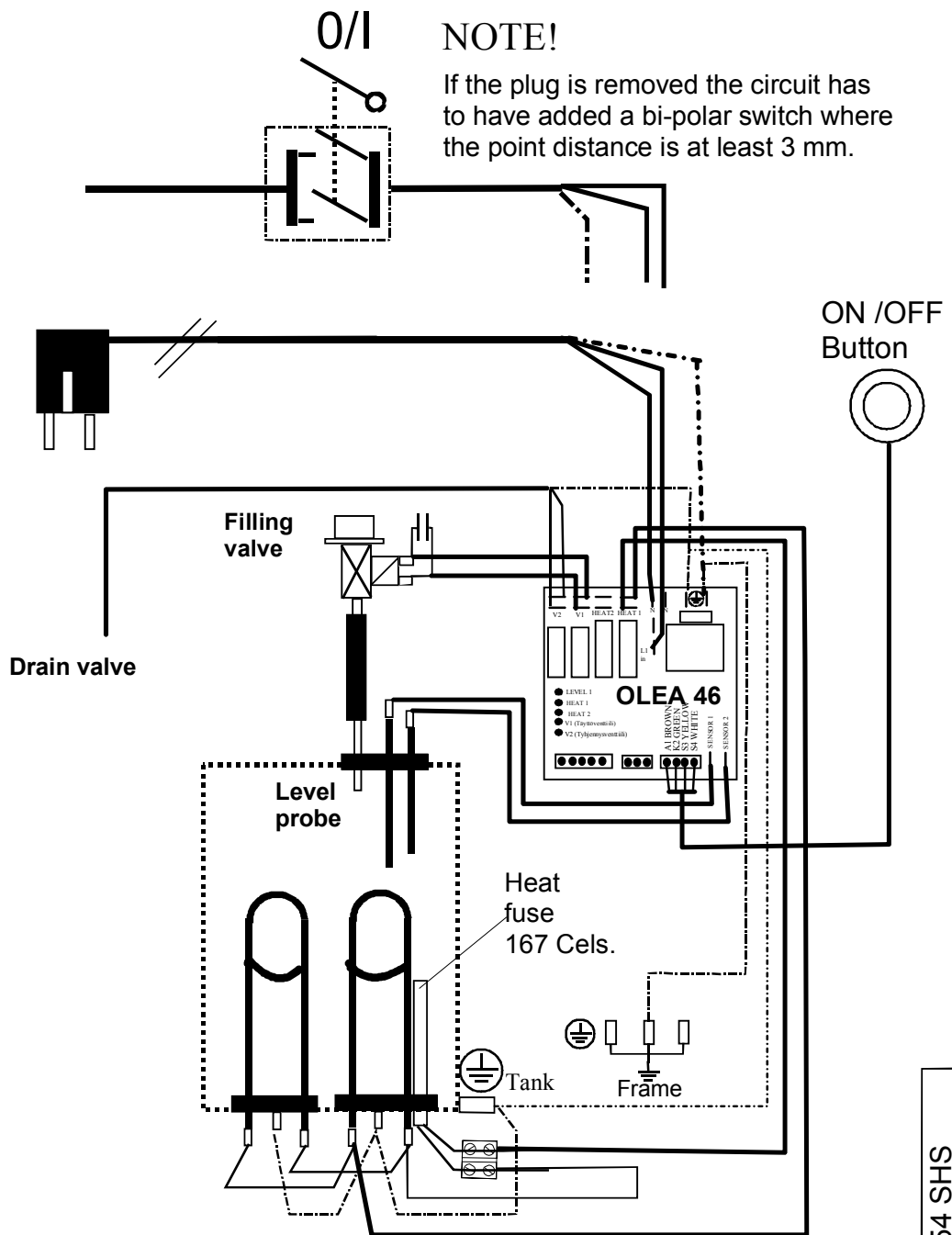


# Circuit Diagram HSAJ-310 230V 3130W

## Type: 1701.-31.

Resistance elements:

| TYPE     | POWER / Heat resistance                |
|----------|--|
| SEPD 177 | 1567W 230V + heat fuse 16A / 167 Cels. |
| SEPD 176 | 1567W 230V                             |



**WARRANTY:**

IDO: text IDO: current warranty regulations

appeal procedure applied in different countries .....

**Warranty card:****Saunatec steam generator.**

The warranty of this steam generator is valid only if the warranty card is filled and sent for registration to the IDO Customer Service for the country in question. Required information has to be filled in the card.

The completed card is sent to the following address:

IDO Norway:

IDO Sweden:

IDO Finland:

IDO .....:

Name:

Address:

Model:

Series number:

Water hardness measured from the steam generator water connection: ..... dH°

Validity of a full warranty presumes fulfillment of the following requirements:

Water hardness can be a maximum of 7dH°.

Water conductivity can be a minimum of 15µS.

Electricity connection: 230 V, 1 N ±10 V. The steam generator is connected to an earthed socket.

Installation location and date:

Location: .....

Date: .....

The undersigned has familiarised her/himself with the information in this warranty card, completed the necessary information and ensured that the steamer has been installed in accordance with the installation instructions:

Signature: .....